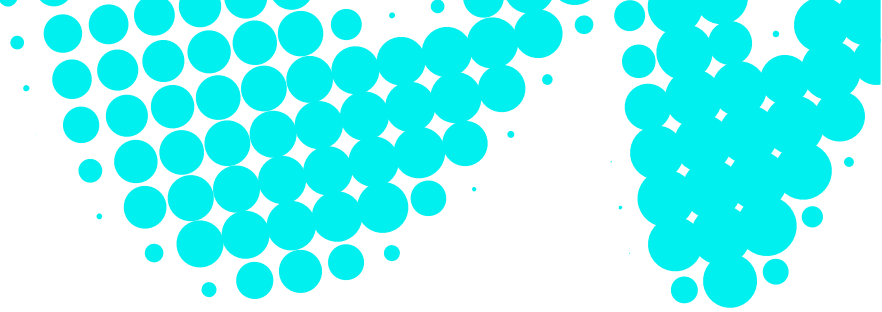


# Policy Statement



## Risk Management

This policy has been prepared in accordance with *ISO 31000:2018 Risk management – Guidelines with guidance for use* to support the Mount Barker District Council owned and operated subsidiary GMB Water's Risk Management Framework.

GMB Water operates a wastewater and recycled water scheme comprising wastewater collection, wastewater treatment, bore water supply, and recycled water treatment and distribution.

GMB Water currently provides wastewater services to more than 15,000 customers, a community of just under 40,000 in Mount Barker, Littlehampton, Nairne and other townships in the district, and includes both a sewer service (in the Mount Barker growth area and to residents of Brukunga) and a broader community wastewater management system (CWMS).

In addition bore water services are provided to around 300 customers in Meadows, and recycled water schemes provide recycled water for use by Council to irrigate parks, gardens and recreation grounds, and to primary producers and industry.

On behalf of the Mount Barker District Council we provide a safe and reliable essential service to protect public health and support our community's businesses, agriculture and economic growth.

***We are committed to understanding and managing our risks and making risk-based decisions to preserve and create value across the organisation and the services we provide***

To achieve these objectives GMB Water will:

- Align risk management practices with the Board's risk appetite to support the achievement of strategic and operational objectives.
- Embed risk management practices into investment decision-making to support the transparent and systematic identification, assessment and prioritisation of risks.
- Support the management of strategic risks – including but not limited to those related to climate change, cyber security and regulatory compliance – through a risk framework and oversight mechanism.
- Foster a culture where effective risk management is integrated into everyday practices and decision making across the organisation.
- Maintain awareness of our operating environment to help identify, assess, and respond to emerging risks and opportunities.

This policy aligns with our vision of delivering sustainable wastewater services for the benefits of our economy, community and the environment.

This Policy applies to all our employees and contractors and any person or organisation that acts for or represents us.

**Helen Edmonds**  
Chief Executive  
2 February 2026

**Mark Gobbie**  
Chair  
2 February 2026