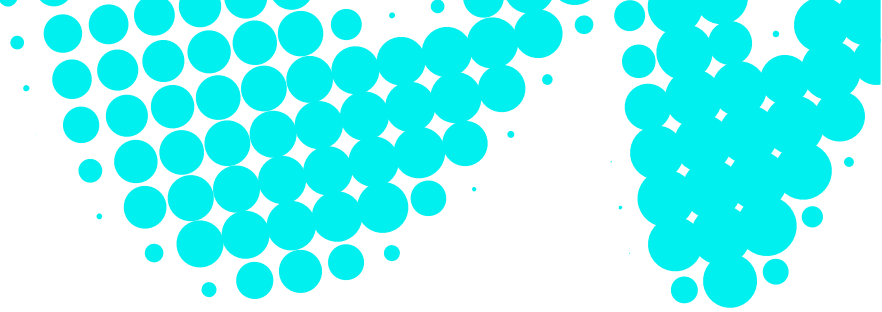


Policy Statement



Health, Safety and Wellbeing

GMB Water operates a wastewater and recycled water scheme comprising wastewater collection, wastewater treatment, bore water supply, and recycled water treatment and distribution.

GMB Water currently provides wastewater services to more than 15,000 customers, a community of just under 40,000 in Mount Barker, Littlehampton, Nairne and other townships in the district, and includes both a sewer service (in the Mount Barker growth area and to residents of Brukunga) and a broader community wastewater management system (CWMS).

In addition bore water services are provided to around 300 customers in Meadows, and recycled water schemes provide recycled water for use by Council to irrigate parks, gardens and recreation grounds, and to primary producers and industry.

On behalf of the Mount Barker District Council we provide a safe and reliable essential service to protect public health and support our community's businesses, agriculture and economic growth.

We are committed to safe and healthy workplaces, employee engagement, inclusion, innovation and accountability and keeping our community safe and healthy.

To achieve these objectives GMB Water will:

- Encourage proactive safety leadership throughout the organization and ensure compliance with applicable legal and regulatory requirements.
- Promote the identification, assessment and control health, safety and wellbeing risks through practical and effective approaches that aim to minimise workplace hazards.
- Foster a safety culture in which our people take ownership of their safety and wellbeing and are empowered to contribute to the ongoing enhancement of health and safety systems and outcomes.
- Strive to provide and maintain a workplace environment that supports both physical and psychological safety.
- Keep abreast of, and where applicable, apply insights from organisational and industry experiences to strengthen and develop safety practices.
- Develop clear objectives and indicators to guide performance, monitoring and identifying opportunities for continuous improvement.
- Facilitate supportive programs that assist employees to return to work following workplace injury or illness.

This policy aligns with our vision of delivering sustainable wastewater services for the benefits of our economy, community and the environment.

This Policy applies to all our employees and contractors and any person or organisation that acts for or represents us.

Helen Edmonds
Chief Executive
2 February 2026

Mark Gobbie
Chair
2 February 2026

This document is the property of GMB Water. It must not be copied or reproduced in any way whatsoever without the authority of GMB Water
This document is uncontrolled when printed. An electronic database manages and stores the controlled version

DOC/26/54897 V2.0 02/02/2026

08 8188 9300
customerservice@gmbwater.au
gmbwater.au

greater
water recovery
for the future

