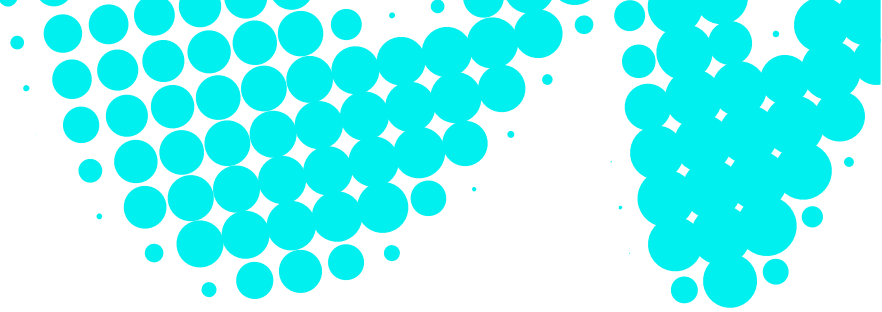


# Policy Statement



## Asset Management

This policy has been prepared in accordance with *ISO 55001:2014 Asset Management Systems – Requirements with guidance for use* to support the Mount Barker District Council owned and operated subsidiary GMB Water’s Asset Management System (AMS).

GMB Water operates a wastewater and recycled water scheme comprising wastewater collection, wastewater treatment, bore water supply, and recycled water treatment and distribution.

GMB Water currently provides wastewater services to more than 15,000 customers, a community of just under 40,000 in Mount Barker, Littlehampton, Nairne and other townships in the district, and includes both a sewer service (in the Mount Barker growth area and to residents of Brukunga) and a broader community wastewater management system (CWMS).

In addition bore water services are provided to around 300 customers in Meadows, and recycled water schemes provide recycled water for use by Council to irrigate parks, gardens and recreation grounds, and to primary producers and industry.

On behalf of the Mount Barker District Council we provide a safe and reliable essential service to protect public health and support our community’s businesses, agriculture and economic growth.

To improve asset management performances, we acknowledge the need to elevate environmental management by means of continual improvement, maintenance and implementation of an Asset Management System

***We are committed to proactive and effective management of our assets to provide value and services for the long term benefit of communities in the Mount Barker district.***

To achieve these objectives GMB Water will:

- Take guidance from the key principles of quality service, regulatory compliance, intergenerational equity, sustainability, service continuity, efficiency and affordability.
- Aim to align asset management practices with the requirements of ISO55001 through a coordinated and integrated approach.
- Value the role of reliable data and information in supporting timely and informed decision making.
- Encourage continuous improvement in asset management practices.
- Seek to engage with customers and other stakeholders to help shape service standards that balance value creation and affordability.
- Strive to manage assets in a way that balances lifecycle costs, desired service standards, and acceptable risk.
- Be mindful of environmental, social, cultural, and economic factors in decision making where relevant.
- Support long-term planning that reflects asset management principles and contributes to reliable and resilient service delivery.
- Acknowledge the importance of our people in driving sound asset management practices, recognising their knowledge and commitment.

This policy aligns with our vision of delivering sustainable wastewater services for the benefits of our economy, community and the environment.

This Policy applies to all our employees and contractors and any person or organisation that acts for or represents us.

**Helen Edmonds**  
Chief Executive  
2 February 2026

**Mark Gobbie**  
Chair  
2 February 2026

This document is the property of GMB Water. It must not be copied or reproduced in any way whatsoever without the authority of GMB Water. This document is uncontrolled when printed. An electronic database manages and stores the controlled version

DOC/26/54816 V2.0 02/02/2026